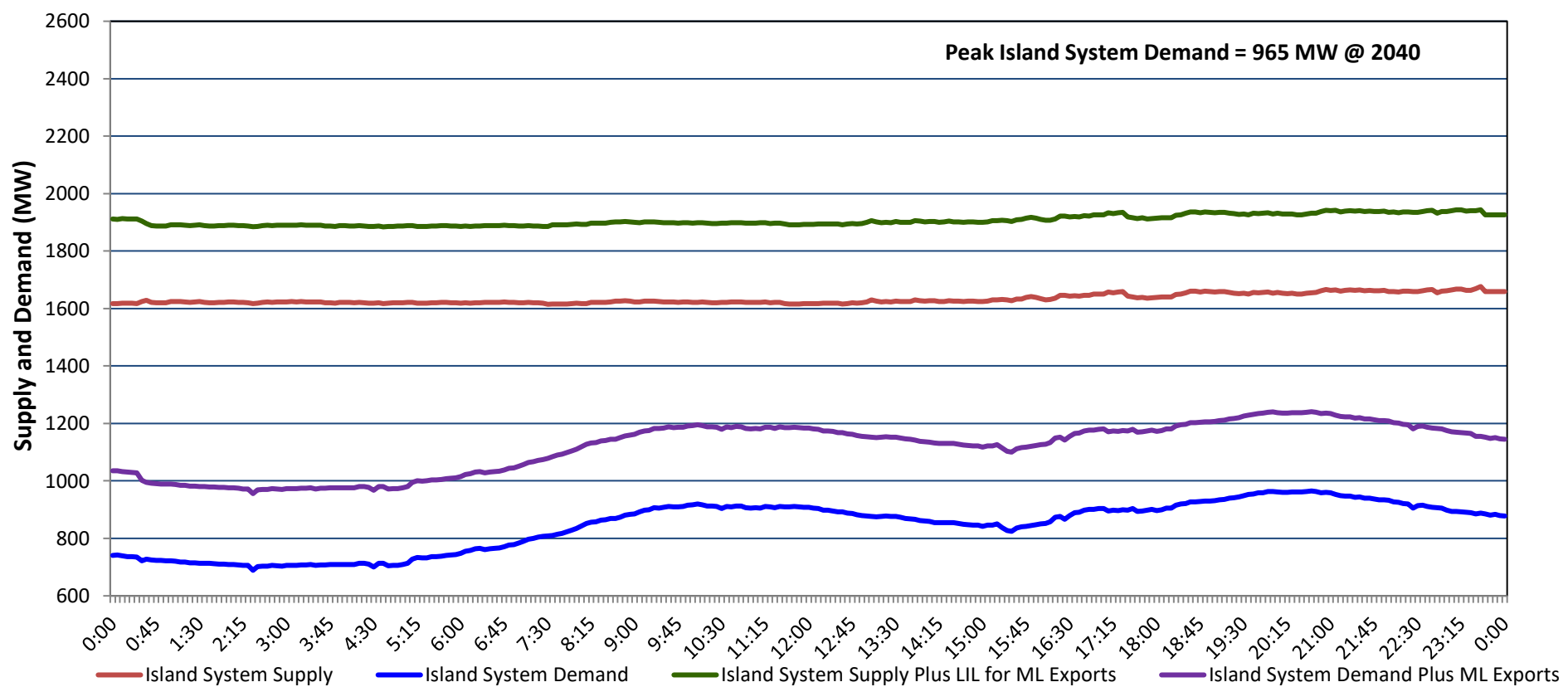


# Newfoundland Labrador Hydro (NLH) Supply and Demand Status Report Filed Monday, March 24, 2025

## Section 1 Island Interconnected System - Supply, Demand & Exports Actual 24 Hour System Performance For Saturday, March 22, 2025



### Island Supply Notes For March 22, 2025

- A** As of 0952 hours, March 11, 2025, Granite Canal Unit available at 32 MW due to forced derating (40 MW).  
**B** As of 0915 hours, March 16, 2025, Bay d'Espoir Unit 6 unavailable due to planned outage (76.5 MW).  
**C** As of 0902 hours, March 20, 2025, Holyrood Unit 3 available but not operating 130 MW (150 MW).  
**D** As of 1601 hours, March 21, 2025, Holyrood Unit 1 available but not operating (170 MW).

## Section 2 Island Interconnected System - Supply, Demand & Outlook

Sun, Mar 23, 2025	Island System Outlook <sup>2</sup>	Seven-Day Forecast	Island System Daily Peak Demand (MW)	
			Forecast <sup>8</sup>	Adjusted <sup>6</sup>
Island System Supply: <sup>4</sup>	1,680 MW	Sunday, March 23, 2025	1,130	1,037
NLH Island Generation: <sup>3,7</sup>	1,290 MW	Monday, March 24, 2025	1,215	1,121
NLH Island Power Purchases: <sup>5</sup>	125 MW	Tuesday, March 25, 2025	1,370	1,274
NP and CBPP Owned Generation:	220 MW	Wednesday, March 26, 2025	1,145	1,052
LIL/ML Net Imports to Island: <sup>9</sup>	45 MW	Thursday, March 27, 2025	1,220	1,126
		Friday, March 28, 2025	1,245	1,151
7-Day Island Peak Demand Forecast:	1,370 MW	Saturday, March 29, 2025	1,190	1,096

### Island Supply Notes For March 23, 2025

- Notes:
1. Generation outages for running and corrective maintenance are included. These are not unusual for power system operations. They generally do not impact customer supply. Hydro schedules outages to system equipment whenever possible to coincide with periods when customer demands are low and sufficient supply reserves are available. However, from time to time equipment outages are necessary and reserves may be impacted.
  2. As of 0800 Hours.
  3. Gross continuous unit output.
  4. Gross output from all Island sources (including Note 3).
  5. NLH Island Power Purchases include: ML Imports, Exploits Generation, Rattle Brook, Star Lake, Wind Generation and capacity assistance (when applicable).
  6. Adjusted for interruptible load and the impact of voltage reduction when applicable.
  7. Due to limitations inherent in the design of combustion turbines, the output of combustion turbines may be reduced in the event that ambient temperatures exceed the threshold required for full rated output. This threshold is dependent on the design of each turbine.
  8. Does not include ML Exports.
  9. LIL Import sunk in the Island System. Actual LIL flows will be restricted by various system conditions including, but not limited to, Island Load, ML Exports and Avalon Unit status.

## Section 3 Island Peak Demand and Exports Information Previous Day Actual Peak and Current Day Forecast Peak

Sat, Mar 22, 2025	Island Peak Demand <sup>10</sup>	20:40	965 MW
	Exports at Peak		276 MW
	LIL Net Imports to Island		525 MWh
Sun, Mar 23, 2025	Forecast Island Peak Demand		1,130 MW

- Notes: 10. Island Demand is supplied by NLH generation and purchases, LIL Imports plus generation owned and operated by Newfoundland Power and Corner Brook Pulp & Paper (Deer Lake Power, DLP).